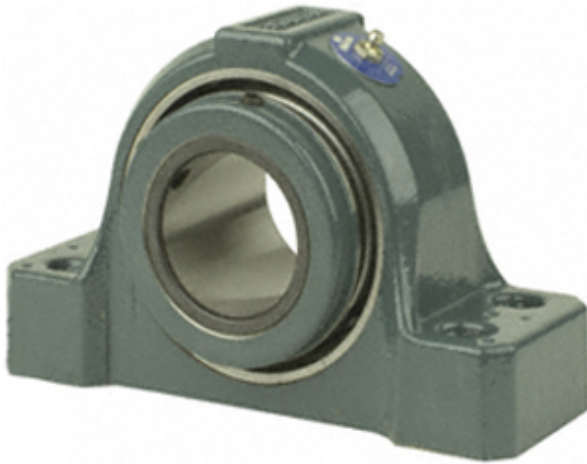




NACHI BEARINGS OF AMERICA CORP.



2.438 Inch | 61.925 Millimeter x 3.203 Inch |
81.356 Millimeter x 2.75 Inch | 69.85 Millimeter
Dodge SP4B-S2-207RE Pillow Block Roller
Bearing Units

Bearing No. SP4B-S2-207RE

SP4B-S2-207RE Bearing 2D drawings and 3D CAD models

Category	Pillow Block Bearings
Inventory	0.0
Manufacturer Name	ABB MOTORS AND MECHANICAL INC
Minimum Buy Quantity	N/A
Weight	8.61
EAN	0782476366667
Product Group	M06288
Number of Mounting Holes	4
Mounting Method	Concentric Collar
Housing Style	4 Bolt Pillow Block
Rolling Element	Spherical Roller Bearing
Housing Material	Cast Steel
Expansion / Non-expansion	Expansion
Mounting Bolts	1/2 Inch
Relubricatable	Yes
Insert Part Number	INS-S2-207R
Seals	Triple Lip Contact
Housing Configuration	1 Piece Solid
Inch - Metric	Inch
Other Features	Double Row Has Flinger With Set Screw
Long Description	4 Bolt Pillow Block; 2-7/16" Bore; 2-3/4" Base to Center Height; Concentric Collar



NACHI BEARINGS OF AMERICA CORP.

	Mount; Spherical Roller Bearing; 6-15/16" Minimum Bolt Spacing; 7-5/16" Bolt Spacing Maximum; Rel
Category	Pillow Block
UNSPSC	31171511
Harmonized Tariff Code	8483.20.40.80
Noun	Bearing
Keyword String	Pillow Block
Manufacturer URL	http://www.dodge-pt.com
Manufacturer Item Number	SP4B-S2-207RE
Weight / LBS	18.96
B	2.75 Inch 69.85 Millimeter
Bolt Spacing Minimum	6.938 Inch 176.225Millimeter
d	2.438 Inch 61.925 Millimeter
Nominal Bolt Center to Center	7.1 Inch 181 Millimeter
Bolt Spacing Maximum	7.313 Inch 185.75Millimeter
D	3.203 Inch 81.356 Millimeter
Actual Bolt Center to Center	0 Inch 0Millimeter